

NORTH STAR HIGH POWER REGIONAL RIFLE CHAMPIONSHIP
NRA CLUB # C0514 NRA RECORD # 2012108213

0900 Aug. 18-19, 2012

1. **RANGE LOCATION:** North Star Rifle Range, 5 miles North of Red Wing, MN, on US Highway 61. Turn West on Greenspring Road. Follow to range (approximately 1 mile. See attached map.). **PLEASE** Observe 20 MPH speed limit on Greenspring and **10 MPH** signs at top of the hill.
2. **FACILITIES:** Camping area and toilet facilities, no water or food will be available. Bring your own.
3. **ALCOHOL:** Consumption of alcohol is prohibited until completion of the match, all shots have been fired and all equipment off the line. Alcohol consumption is allowed only in the parking lot behind 600 and in the camp ground. NOTE: This does not prohibit practice after the match for those not consuming.
4. **RULES:** Current NRA High Power Rifle Rules will govern the regional. CMP rules govern the EIC match.
5. **INDIVIDUAL ENTRIES:** Make entries in Individual events on attached form. Registration and entry card (NRA membership ID number must be included) accompanied by check or money order for Adult or Junior Package Fee only, payable to North Star Rifle Club. Be sure to indicate your correct NRA classification, division and category (Woman, Senior, etc.) Mail checks (payable to NSRC) and entries to:

Kurt Moline
7396 31st St. N.
Oakdale, MN: 55128
612-280-7189
kurtmoline@comcast.net

Do not include any funds for Match #9 - CMP "Leg" Match on individual entries. Fees of persons unable to attend will be refunded providing cancellation is made prior to Aug. 16, 2012 6PM.. Competitors failing to retrieve their competitor packets by 0835, Aug. 18 may be removed from the squadding schedule and their registration fees forfeited.

6. **TEAM ENTRIES:** Team Captains will pick up the Team Entry and Score Card and will pay team fees at the range unless prior arrangements are made. Cards will be completed and turned in to the Stat Officer Prior to the start of the team match Saturday afternoon. Team Captains are responsible that any team firing members not previously registered, complete and turn in a SR-1 Registration and Entry card. Note: Pickup teams are allowed. Competitors shooting team only must pay the \$9.00 NRA fee in addition to team entry.
7. **ENTRIES CLOSE:** Team entries close prior to the start of Match 8. CMP "Leg" entries close Sunday Aug. 19 no earlier than 1045 hrs.
8. **ENTRY LIMITS:** 60 individual competitors. Team entries limited to 16 teams. Leg Match limited to 60 competitors. Post entries may be accepted up to the limit of range capacity, provided such entries do not require the squadding of extra relays.
9. **FEES:** All individual competitors must enter entire package which include the \$9.00 NRA Registration Fee, all individual fired matches, and aggregates (except NBPRP match #9), and a 2012 High Power Regional Pin:

ADULT Regional Championship PACKAGE FEE:	\$35.00
JUNIOR Regional Championship PACKAGE FEE:	\$20.00
TEAM FEE: (per 4-man team)	\$24.00*
CHALLENGE FEE: (Rule 16.1)	\$3.00
LEG MATCH:	\$20.00

* - Team members not firing the Regional Championship must pay an additional \$9.00 NRA registration fee. Team fee includes NRA entry fee of \$6.00/team

LIABILITY RELEASE: For those who have not fired an EIC match previously at Northstar you must present a notarized copy of the CMP supplied liability release form. THERE ARE NO EXCEPTIONS TO THIS CMP RULE. It's a CMP deal, not ours. NOTARY WILL NOT BE AVAILABLE ON SITE.

10. **SQUADDING:** All matches will be squadded & high masters on relay 1 in order of advance entry.
11. **TARGET SERVICE:** Competitors will operate targets, any competitor failing to provide pit service may be disqualified. Competitors hiring personnel to fulfill their pit service duties are required to ensure that those so hired will be experienced, capable of operating the targets and providing good target service.
12. **SCORING:** Competitors will score, any competitor failing to perform his scoring duties may be disqualified in that event. Teams will be required to provide a scorer in Match #8.
13. **CATEGORIES AND CLASSES IN AGGREGATE MATCHES WHERE AWARDS ARE PROVIDED BY THE NRA:** Civilian competitors will be eligible under Rules 2.5, 2.6 and 2.7. All others will compete as civilians. The NRA furnishes awards only for Match #7 and Match #8.

TEAM CATEGORIES: Service, Civilian and Junior. State Association team members must be Civilian category (Rule 2.2). State Association teams must have prior approval as required by NRA Rule 2.12.

14. **AWARD DISPOSITION:** There must be five or more entries in a class for one award, 10 or more for two awards and 15 or more for three awards. North Star Rifle Club will not provide awards below third place, regardless of the number of entries. If there are fewer than the required number of entries in a class to provide awards, they will be combined with the same class in another category. If there are still fewer than 5 entries after combining all categories of a class, there will be no awards provided in that class. All competitors in the lower class will be moved back to their respective categories in the next higher class, until there are a minimum of 5 competitors in the combined class. If there are fewer than 5 High Masters entered, they must fire for open awards only. The High Master Class may not be combined with the Master Class.

The Service Rifle category is eligible for awards in Match #7 only and there must be a minimum of 5 competitors. In Match #1 through Match #6, the Service Rifle categories will be combined, for award purposes, with the Match Rifle categories. Special Award Categories for Regional Championship (Match #7)

1. Senior (Rule 2.2.1)
2. Woman
3. Junior (Rule 2.3)
4. Service Rifle

There must be five or more competitors in a Special Award Category for an award be given.

An individual winning an award (Winner, 2nd or 3rd Open) in Match #7 shall be entitled to Special Awards for which he or she is qualified. To be eligible for Special Awards, the individual must indicate on the entry (SR-1) any and all Special Awards for which he or she is eligible.

NRA AWARDS: The NRA will provide the Gold, Silver and Bronze Regional Medallions for presentation to the Regional Champion, Second Place and Third Place Open in the aggregate.

Awards will be distributed starting 30 minutes after the conclusion of the match. Competitors are responsible for noting their posted scores prior to the awards distribution and calling any discrepancy to the attention of the Match Director. The match awards are considered final at that time.

REGIONAL CHAMPIONSHIP AWARDS: MATCH #7

Winner:	NRA Regional Gold Medallion,	25 Award Points
2nd Place:	NRA Regional Silver Medallion,	20 Award Points
3rd Place:	NRA Regional Silver Medallion,	15 Award Points

CATEGORY AWARDS: MATCH #7

High Senior:	10 Award Points
High Woman:	10 Award Points
High Junior:	10 Award Points
High Service Rifle	10 Award Points

INDIVIDUAL FIRED MATCHES 1 THROUGH 6:

Match Winner:	TBD
---------------	-----

CLASS AWARDS MATCHES 1 THROUGH 8:

1st Place:	TBD
2nd Place:	TBD
3rd Place:	TBD

Class Awards: NRA Award Points based on the number of competitors in an award group. Award Points are provided by North Star Rifle Club.

TEAM MATCH AWARDS: Match #8

Winning team: 40 NRA award points for the winning team. Class and Category Awards for each 5 teams in an award group.

MATCH SCHEDULE

0900 Saturday, Aug. 18, 2012

Match 1: 2 Sighting shots and 20 shots for record, standing, slow fire, 200 yards, SR target. Rule 5.12.

Match 2: 2 Sighting shots and 20 shots for record, sitting or kneeling from standing, rapid fire, 200 yards, SR target, Rule 5.8 or 5.10.

Match 3: 2 Sighting shots and 20 shots for record, prone from standing, rapid fire, 300 yards, ST-3 target. Rule 5.6.

Match 4: 2 Sighting shots and 20 shots for record, prone, slow fire, 600 yards, MR-1 target. Rule 5.6.

Match 5: The Slow Fire Aggregate - An aggregate of Matches #1 and #4.

Match 6: The Rapid Fire Aggregate - An aggregate of Matches #2 and #3.

Match 7: The Regional Championship - An aggregate of Matches #1, #2, #3 and #4.

The 600 yard stage of the Team Match will be fired Saturday afternoon following the completion of Match 4, approx 1500 hrs.

MATCH 8: 4 Man Team Match, 50 shot National Match Course. 2 Sighting shots, 20 shots for record, prone slow fire, 600 yards.

0900 Sunday Aug. 19, 2012

Match 8 Continued: 2 Sighting shots allowed prior to each stage.
10 shots: Slow fire, 200 yards, standing
10 shots: Rapid fire, 200 yards, standing to sitting or kneeling; time - 60 seconds.
10 shots: Rapid fire, 300 yards, standing to prone; time - 70 seconds.

1100 Sunday, Aug. 19, 2012 (Approximate time.)

Match 9: CMP Service Rifle Excellence-in-Competition Match

NOTE: Start time is approximate. Team Match 8 (above) to be completed first. There will be a short break after the Team Match for squadding leg match entries.

CMP Service Rifle Excellence-in-Competition Match

Approximately 1100HRS Sunday Aug. 19, 2012

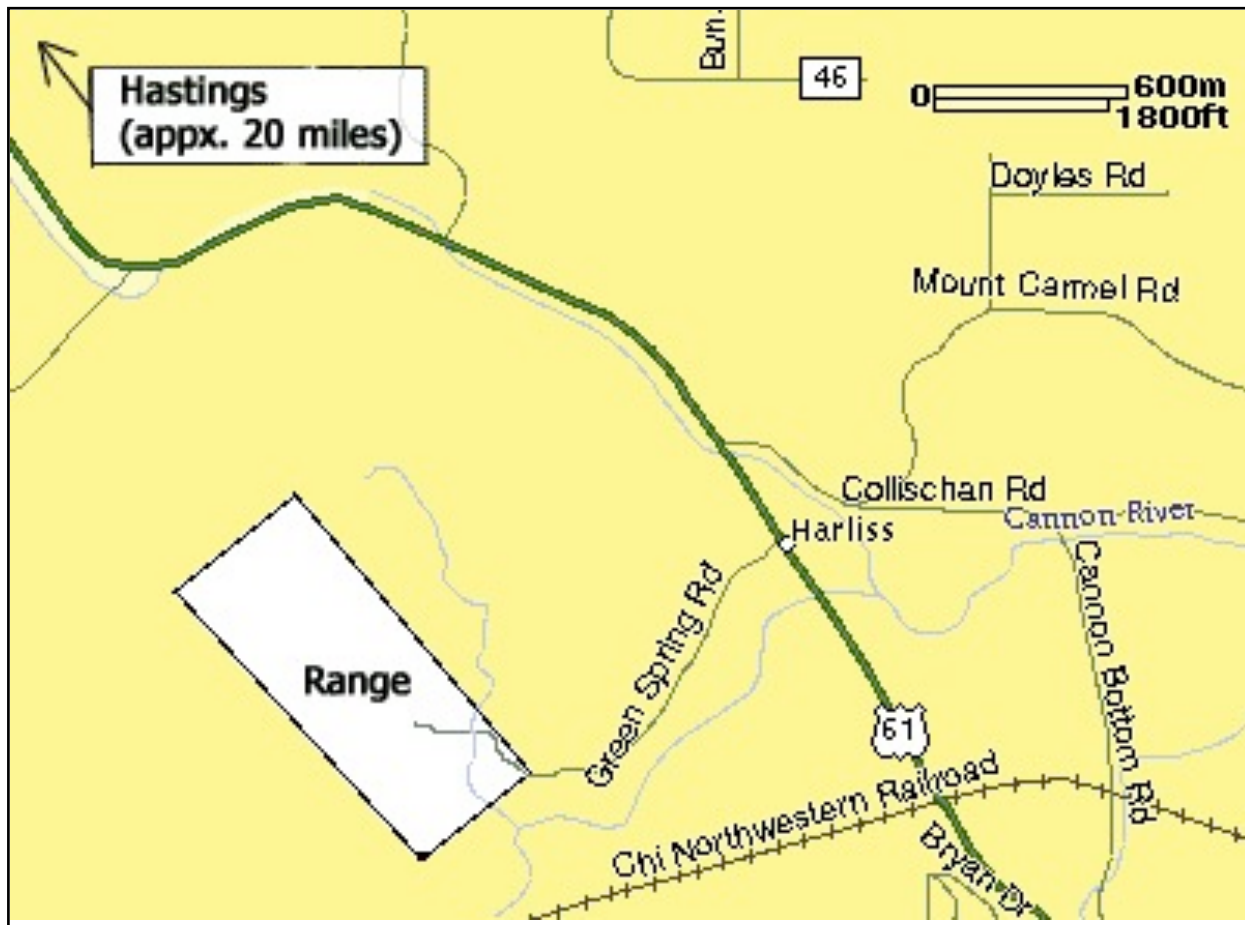
Match 9: North Star Regional CMP Service Rifle Match. (It is not necessary to enter the NRA Matches to fire this event.)

OPEN TO: Any able-bodied citizen of the United States, 16 years of age or older on the date of the match.

RULES: CMP rules will be used

ENTRY LIMITS: 60 Competitors. Priority to non-distinguished.

ENTRIES: To make an entry, pick up the CMP Entry & Score Card at the range.
ENTRY FEE: \$20.00, paid by the individual at time of issuance of blank CMP Entry Card. This fee must be paid in cash by all competitors. Do not include this fee with NRA Match fees.



ENTRIES CLOSE: 1030HRS Aug. 19, 2012

TARGET SERVICE AND SCORING: Competitors will operate targets and score.

COURSE OF FIRE: The National Match Course (50 shots). No sighting shots.
 Stage 1: Slow fire, 200 yards, 10 shots standing. Time: 10 minutes.
 Stage 2: Sustained fire, 200 yards, 10 shots sitting or kneeling from standing. Time: 60 seconds.
 Stage 3: Sustained fire, 300 yards, 10 shots prone from standing. Time: 70 seconds.
 Stage 4: Slow fire, 600 yards, 20 shots, prone. Time: 20 minutes.

AWARDS: Credits toward Distinguished Designation and appropriate Excellence-in-Competition Badges, as provided in AR-622-10 and AR-672-5-1.

Directions: Take US 61 to Green Springs (approx. 150 yards North of the bridge over the Cannon River). Turn West on Green Springs - follow 'til it ends. Please drive slowly and carefully on Green Springs as we want to be good neighbors!

IMPORTANT DATES AND TIMES

	<u>Date</u>	<u>Time</u>	<u>Event</u>
	Friday	Aug. 18, 12	1200 Range Open /Camping
		<u>Time</u>	<u>Event</u>
	Saturday	Aug. 19, 12	0825 Post entries close, competitor packets must be picked up
		0845	Pits are sealed
		0900	Individual Matches begin
		1530	Team Match begins at 600 yds (approx)
	Sunday	Aug. 19 12	0845 Pits are sealed

